

RECEIVED: 25/02/2026

Appendix 7.2

Photographic Record

RECEIVED: 25/02/2026

PHOTOGRAPHIC RECORD

APPENDIX 7.2

ATTACHED TO EIAR CHAPTER 7.0 ARCHITECTURAL HERITAGE

MILLTOWN PARK, SANDFORD ROAD, DUBLIN 6

July 2025

M



MOLLOY & ASSOCIATES
CONSERVATION ARCHITECTS

MARLAY • PROBY SQUARE • BLACKROCK • CO. DUBLIN • A94K4P8
M 086 8514361 E NFO@MOLLOYASSOCIATES.IE



RECEIVED: 25/02/2026

Please note that this record has been updated from that first taken in 2019 and repeated in 2023. Given the passage of time, certain original images are retained to overcome inclusion of potentially unclear images influenced by sustained vacancy, where the essence of the image remains unchanged.

MILLTOWN PARK, SANDFORD ROAD, DUBLIN 6

CONTENTS

APPENDIX A7.2.1	BUILDING A MILLTOWN PARK HOUSE - EXTERNAL ELEVATIONS
APPENDIX A7.2.2	BUILDING B REAR EXTENSION BLOCK - EXTERNAL ELEVATIONS
APPENDIX A7.2.3	BUILDING C TABOR HOUSE - EXTERNAL ELEVATIONS
APPENDIX A7.2.4	BUILDING D CHAPEL - EXTERNAL ELEVATIONS
APPENDIX A7.2.5	BUILDING E FINLAY WING - EXTERNAL ELEVATIONS
APPENDIX A7.2.6	BUILDING F ARCHIVE - EXTERNAL ELEVATIONS
APPENDIX A7.2.7	SANDFORD SITE PERIMETER WALL
APPENDIX A7.2.8	BUILDING A MILLTOWN PARK HOUSE – INTERNAL IMAGES
APPENDIX A7.2.9	BUILDING B REAR EXTENSION BLOCK - INTERNAL IMAGES
APPENDIX A7.2.10	BUILDING C TABOR HOUSE - INTERNAL IMAGES
APPENDIX A7.2.11	BUILDING D CHAPEL - INTERNAL IMAGES
APPENDIX A7.2.12	BUILDING E FINLAY WING - INTERNAL IMAGES
APPENDIX A7.2.13	BUILDING F ARCHIVE - INTERNAL IMAGES

RECEIVED: 25/02/2026

APPENDIX A7.2.1

BUILDING A

MILLTOWN PARK HOUSE - EXTERNAL ELEVATIONS

RECEIVED: 25/02/2026

- A Milltown Park House
- B Rear Extension
- C Tabor House
- D Chapel
- E Finlay Wing
- F Archive





Plate 1: Milltown Park House entrance with some of its many extensions visible



Plate 2: Main entrance to Milltown Park House with original ionic columns and cobweb fanlight over



Plate 3: North east gable from drive way passing Tabor House (to right) with rear extension in context



Plate 4: View west of the same elevation with the rear extension, link building and turret of small Sacred Heart Chapel (1911) in view



Plate 5: View of the much modified southern elevation of Milltown Park House where it connects to the Rear Extension, Finlay Wing and the Archive building



Plate 6: As above with view north east towards rear of Finlay Wing (1908)



Plate 7: Upper floors of rear (west) elevation of Building A in background, with roof of link building to Chapel in foreground.

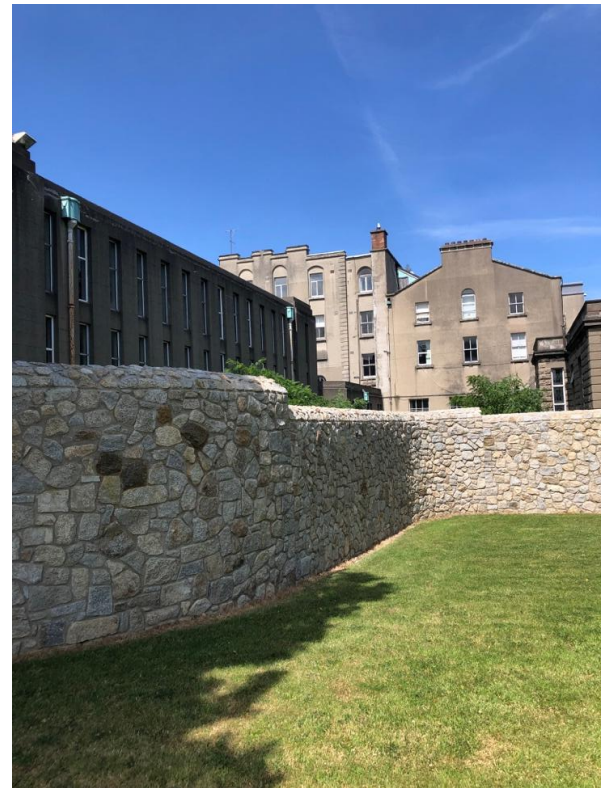


Plate 8: Southern elevation of Building A, with the Archive (Building F) to the left and the Finlay wing (Building E) to the right, with recently constructed boundary wall in foreground

RECEIVED: 25/02/2026



Plate 9: View of front elevation of MPH. Note later extension over entrance portico. The gable of the Finlay wing visible to the left of entrance.



Plate 10: View on south-west elevation of MPH, positioned between the Archive (left) and the Finlay wing (right).

APPENDIX A7.2.2

BUILDING B

REAR EXTENSION BLOCK - EXTERNAL ELEVATIONS

RECEIVED: 25/02/2026

- A Milltown Park House
- B Rear Extension
- C Tabor House
- D Chapel
- E Finlay Wing
- F Archive





Plate 11: North east gable of rear extension block in context



Plate 12: View west of the same elevation with the rear extension, link building and part of Sacred Heart Chapel (1911), concealed by trees



Plate 13: North elevation of Milltown Park, which was vertically extended in the late 19th century with north elevation of the higher, rear extension which was constructed in the 20th century



Plate 14: Rear extension with repaired gable following removal of former link structure, recently demolished.



Plate 15: The rendered south elevation of the rear extension



Plate 16: Trench at base of lower ground of rear extension



Plate 17: Panelled door to rear entrance of rear extension, late 19th century



Plate 18: View of the (later) northern extension from a rear 1st floor window of Milltown Park house, towards the opposing (original) H form comprising a lower building, possibly intended to align with MPH



Plate 19: Southwest view of the rear extension, above the connection with the archive building.



RECEIVED: 25/02/2026

Plate 20: South-west elevation of the rear extension to MPH, with projecting gable to match that on eastern end, and new boundary wall in foreground



Plate 21: North-west elevation of link between rear of MPH extension and Chapel. Rusticated stone surround to gated passage to central courtyard. New boundary wall, part of recent separation works, in foreground.

APPENDIX A7.2.3

BUILDING C

TABOR HOUSE - EXTERNAL ELEVATIONS

RECEIVED: 25/02/2026

- A Milltown Park House
- B Rear Extension
- C Tabor House
- D Chapel
- E Finlay Wing
- F Archive



RECEIVED: 25/02/2026



Plate 22: Symmetrical front elevation of Tabor House, a three storey over lower ground floor, 7 bay building. Temporary prefabricated structures in foreground.



Plate 23: Original panelled front door with fanlight and granite steps to Tabor House



Plate 24: Tabor House rear/west elevation, with bowed bay of central staircase, note the array of fenestration types; the original 2 over 2 sashes being the most prevalent



Plate 25: Tabor House west elevation in context



Plate 26: North-east gable of Tabor House in context



Plate 27: West elevation with bowed bay

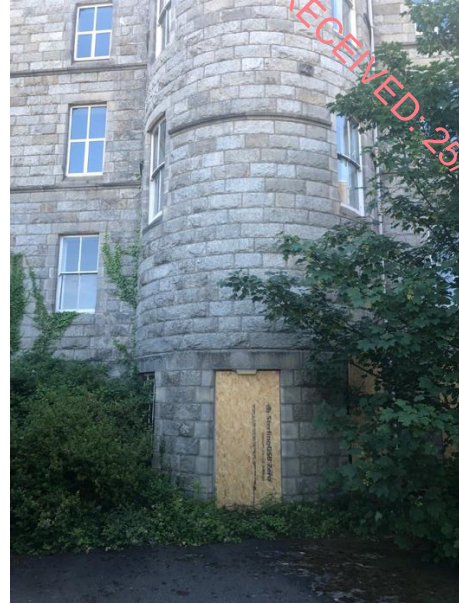


Plate 28: Bowed bay with panelled double doors at rear of Tabor House



Plate 29: North east gable elevation of Tabor House



Plate 30: Side door of Tabor House with stained glass on first floor, a later modification



Plate 31: Connection of Tabor House to the later Chapel: comprising a set of stone steps to first floor level, and a glazed link at second floor to the mezzanine at the rear of the Chapel



Plate 32: Cast iron balustrade on stairs to 1st floor

APPENDIX A7.2.4

BUILDING D

CHAPEL- EXTERNAL ELEVATIONS

RECEIVED: 25/02/2026

- A Milltown Park House
- B Rear Extension
- C Tabor House
- D Chapel
- E Finlay Wing
- F Archive



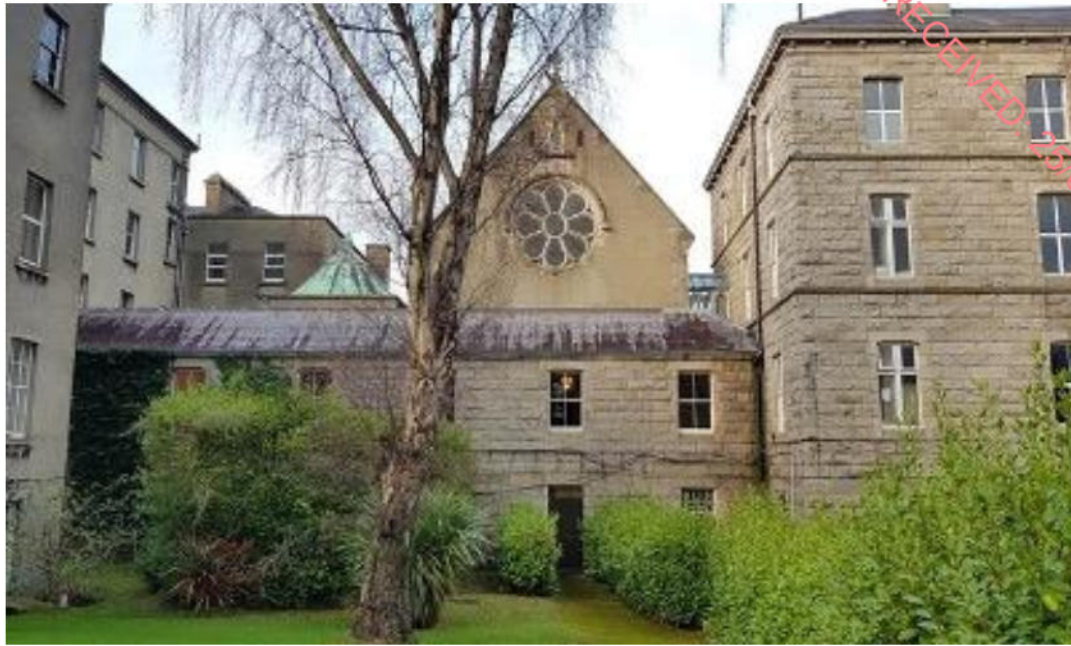


Plate 33: (2023 image included for clarity) Front elevation of Chapel, above linking building, with stained glass Rose window on east gable with copper turret of Sacred Heart Chapel south of it. Both Chapels are accessed from within Milltown Park House.



Plate 34: (2023 image included for clarity) Wider view of Chapel link front to Tabor House



Plate 35: Link building connection to rear extension to Milltown house with small turret of Sacred Heart Chapel in view and larger domestic Chapel just out of view



Plate 36: Rear of Chapel with Tabor House in foreground.



Plate 37: Rear of Chapel, copper turret, with rock-faced granite lower floor and adjoining link building, with dressed window surrounds, image taken from within Gonzaga College grounds with recently erected wall in foreground.



Plate 38: Rear of Chapel and adjoining link building connection to rear extension to Milltown House



Plate 39: Rear of linking building with boundary of neighbouring property.



Plate 40: Gated opening to central courtyard at rear of lining structure, between Chapel and rear extension



Plate 41: Render to apse of church and rock faced granite lower ground level floor. Note modern windows at lower level



Plate 42: Double transept to NW of Chapel, rendered with ashlar quoins, cast iron rain water goods



Plate 43: NW Elevation of Chapel



Plate 44: Copper Roof of sacristy, building D2



Plate 45: Copper Roof of sacristy, building D2, with slate roof of link building in foreground.



Plate 46: Roof of link building, facing towards south-west gable of Tabor House.

APPENDIX A7.2.5

BUILDING E

FINLAY WING - EXTERNAL ELEVATIONS

RECEIVED: 25/02/2026

- A Milltown Park House
- B Rear Extension
- C Tabor House
- D Chapel
- E Finlay Wing
- F Archive





Plate 47: Finlay Wing from new Sandford Road entrance, rendered finish with raised quoins



Plate 48: North elevation of Finlay wing, in context with Milltown Park House



Plate 49: View of Finlay wing, south west from the main entrance



Plate 50: View of building range on entering Sandford Road gates from south



Plate 51: Leaded windows in Finlay wing. Rock-faced ashlar finish to upper ground level.



Plate 52: Southern elevation of Finlay wing

RECEIVED: 25/02/2026



Plate 53: View of NW elevation of Finlay wing and awkward connection to Milltown House. Note stained window panes dating from post 1949 reconstruction



Plate 54: View of west elevation. Smooth ashlar finish to lower ground level with rock-faced finish to upper ground level.

APPENDIX A7.2.6

BUILDING F

ARCHIVE - EXTERNAL ELEVATIONS

RECEIVED: 25/02/2026

- A Milltown Park House
- B Rear Extension
- C Tabor House
- D Chapel
- E Finlay Wing
- F Archive



RECEIVED: 25/02/2026



Plate 55: East elevation of the Archive (built 1938) in background (with south side of Finlay wing in view)



Plate 56: South-west gable of archive with 1970's single storey extension in foreground



Plate 57:: SW Gable of archive



Plate 58: SE elevation, Finlay wing in foreground



Plate 59: SW elevation of archive

RECEIVED: 25/02/2026



Plate 60: SE elevation of Archive wing. Original 1930's window frames. Copper hoppers to rainwater goods, Art deco detailing of parapet walls



Plate 61: Southern elevation of Milltown house with Archive wing in context

RECEIVED: 25/02/2026



Plate 62: NW elevation of Archive wing where it joins the Rear Extension of Milltown Park House. This is the only point of entry which is internally via Milltown Park House and involves a series of level changes



Plate 63: As above closer view of the Link to/from the Archive wing



Plate 64: View of SE elevation of archive, as viewed from the rear extension to MPH



RECEIVED: 25/02/2026

Plate 65: Roof of archive with domed roof lantern, as viewed from the rear extension to MPH



Plate 66: West elevation



Plate 67: Detail of metal framed casement windows



Plate 68: Art deco style parapet detail on end bay

APPENDIX A7.2.7

SANDFORD SITE PERIMETER WALL

RECEIVED: 25/02/2026



Plate 69: Vehicular entrance Milltown Park House and Jesuit Institute, with pedestrian gates in each of the flanking walls



Plate 70: Detail of arrows to central bullseye on cast iron gate in flanking wall of front entrance, with carved granite architrave

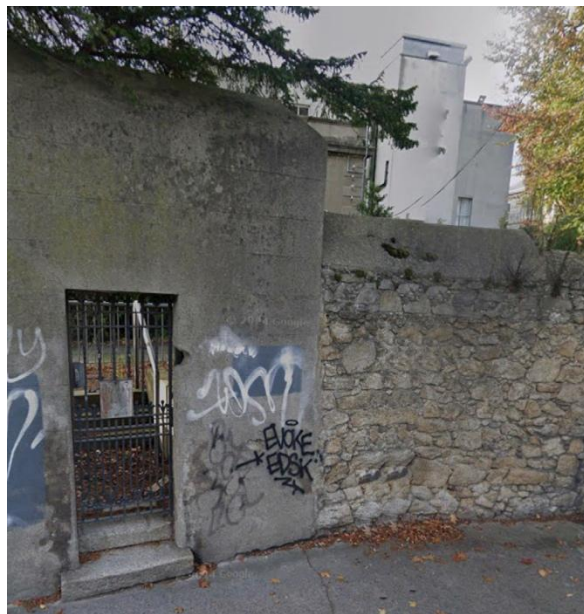


Plate 71: Side gate on Sandford Road, no longer in use, cut granite step and rendered walls



Plate 72: Perimeter rubble wall on Milltown Road with Chapel, stained glass window and Milltown Park House in background



Plate 73: Section of rubble boundary wall on Milltown Road



Plate 74: View of rubble wall and trees visible from Milltown Road



Plate 75: Example of reconstruction of previously collapsed section of wall by others



Plate 76: Composition of boundary wall varies, sections of rubble wall have been infilled



Plate 77: Curve of wall looking up Milltown Road towards new entrance, note multiple pointing types cement repairs to rubble wall



Plate 78: Curve of wall looking down Milltown Road, with pedestrian gate in centre



Plate 79: Entrance from Milltown Road



Plate 80: View of range of buildings on site looking north west down Milltown Road

APPENDIX A7.2.8

BUILDING A

MILLTOWN PARK HOUSE – INTERNAL IMAGES

RECEIVED: 25/02/2026

- A Milltown Park House
- B Rear Extension
- C Tabor House
- D Chapel
- E Finlay Wing
- F Archive



A7.2.9.1. Entrance Level



Plate 81: Reception area on entering main entrance to Milltown Park House from original front lobby



Plate 82: Entrance door of Milltown Park House with cobweb fanlight visible

RECEIVED: 25/02/2026

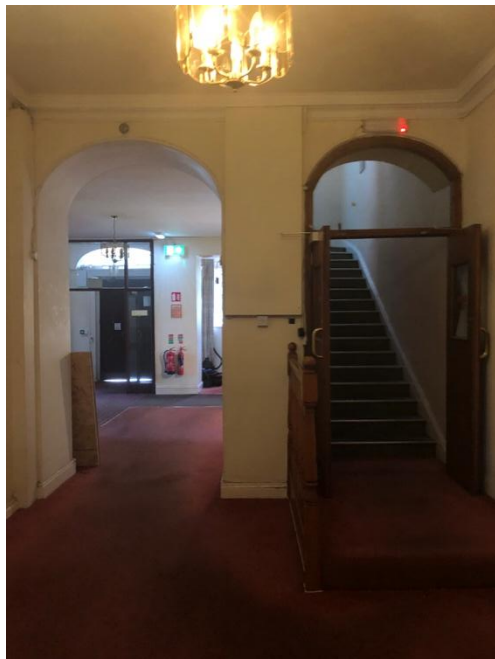


Plate 83: Facing south east, view of later stair to 1st floor from rear of reception area



Plate 84: Entrance vestibule which was previously a small chapel, Holy Rosary Chapel used for personal prayer

RECEIVED: 25/02/2026



Plate 85: Later stair to 1st floor from rear of reception area



Plate 86: Crucifixion stained glass by Joshua Clarke, Clarke Studios



Plate 87: Vestibule/Holy Rosary Chapel, due north towards the apse and stained glass window



Plate 88: Stained glass signed CLARKE FREDK. ST DUBLIN 1897



Plate 89: Reception room to northeast off entrance hall. Some original features remain



Plate 90: Sliding shutter to vestibule in same room



Plate 91: Fireplace and stuccoed cornice in same room



Plate 92: Connection with rear extension block, from rear of entrance hall, with dormitories and study rooms on either side of hall

RECEIVED: 25/02/2026



Plate 93: Storage area to left on entering main door, within later single storey extension to the front of the house



Plate 94: Link within same extension connecting the reception area to the Finlay Wing



Plate 95: Large room within the former Orangery to the south with full height ceiling, missing fireplace, and more recently in use as kitchen/diner



Plate 96: Historical features such as decorative plasterwork and fireplace removed.

A7.2.9.2. Basement Level

RECEIVED: 25/02/2026



Plate 97: Former kitchen to northwest at basement level, with original masonry and floor flags evident. Note concrete downstand beam for concrete floor plate supporting entrance level above



Plate 98: View east in same room



Plate 99: Note multiple layers of intervention; infilled masonry and brick arch-headed opening, later concrete structure

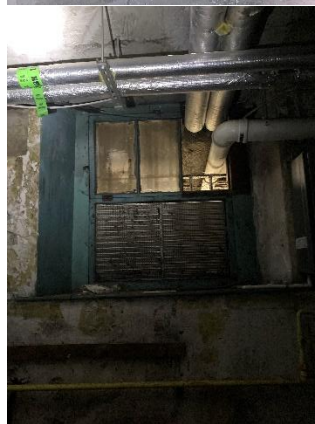


Plate 102a, b: 18th century fabric within basement level accommodation

A7.2.9.3. First Floor Level

RECEIVED: 25/02/2026



Plate 100: Corridor within first floor extension above original orangery to south



Plate 101: Archway leading to stairs to entrance level



Plate 102: First floor level infilled entrance hall with later stairs leading to vertical extension.

RECEIVED: 25/02/2026



Plate 103: Later stairs to upper level of Milltown Park House

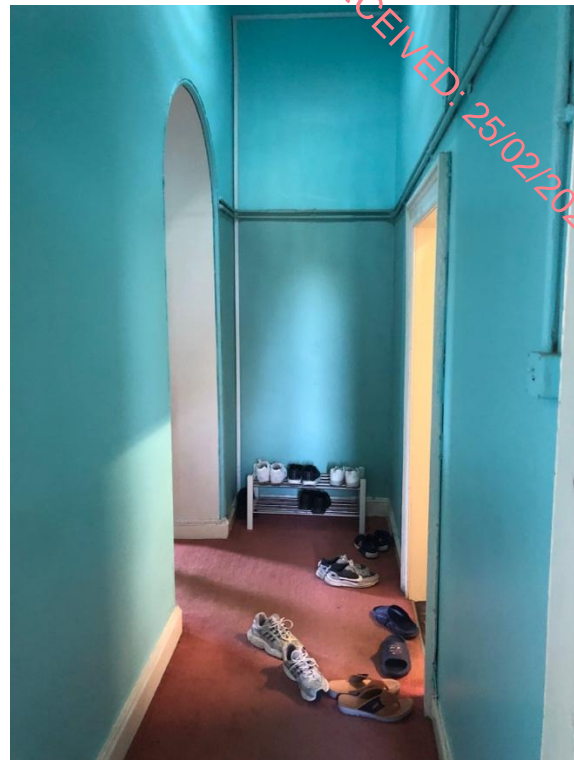


Plate 104: Lobby within MPH, picture rail and panelled door.

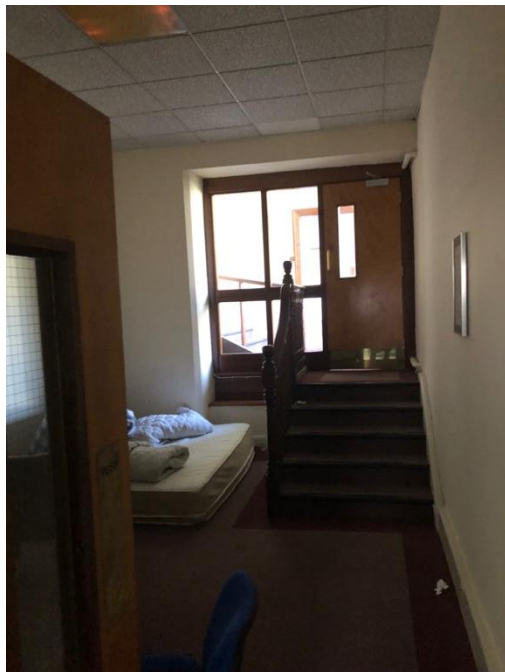


Plate 105: Stair access from 1st floor level of Milltown Park House to rear extension block, from within a modified rear room to southwest

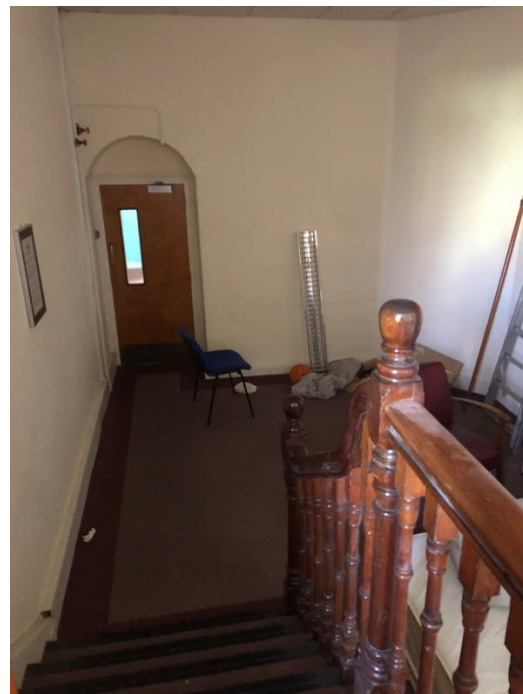


Plate 106: As previous, opposing view



Plate 107: Typical room within first floor of MPH.

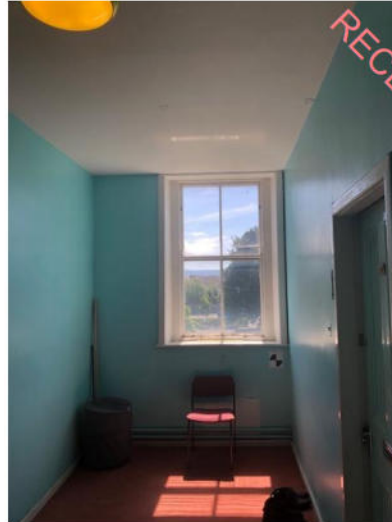


Plate 108: Modified upper level. Dropdown beam supporting vertical extension over. View facing south-west. Contemporary linings and loss of original layout evident.



Plate 109: Typical cellular room on the upper level. Panelled door, six-over-six sash window with moulded architrave. No decorative plasterwork.



Plate 110: Panelled door to bathroom, projected above main entrance on front, south-east facing elevation.



Plate 111: Typical cellular room on the upper level. Panelled door, sash window with moulded architrave. No decorative plasterwork.



Plate 112: Simple mantel to chimneypiece, not in use. Panelled door to alcove store.



Plate 113: Amalgamated room, with beam supporting structure on level over. Evidence of water ingress. Exposed services. No chimneypiece or historic plasterwork.

A7.2.9.4. Second Floor Level



Plate 114:: Stairs from first floor viewing up

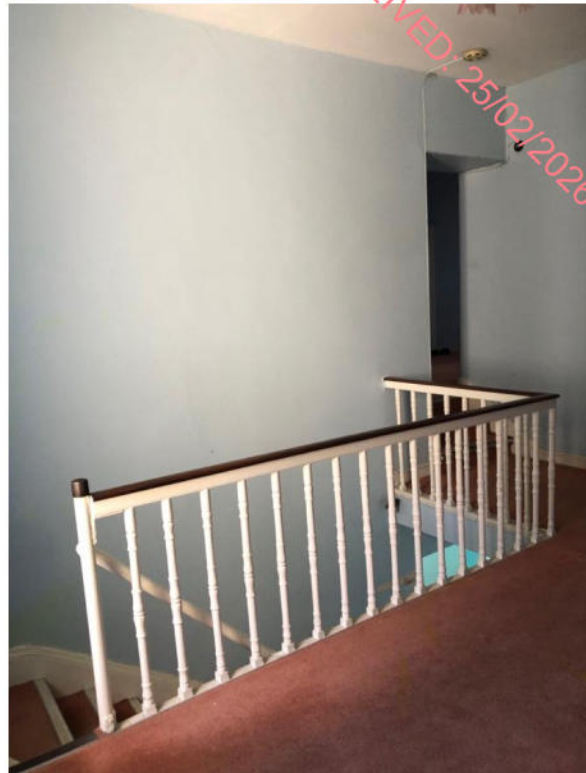


Plate 115: Level 2 Landing within MPH with mahogany painted stair rail. No decorative plasterwork.



Plate 116: Level 2 landing facing south-east towards front elevation.



Plate 117: Level 2 landing facing south.

RECEIVED: 25/02/2026



Plate 118: Internal circulation within the uppermost level of Milltown Park House



Plate 119: Central hall at 2nd floor level linking to rear extension block. Note water tank room to lhs of image which extends up into roof void



Plate 120: Opening up investigations to uncover brick substrate.



Plate 121: Access to rooms within southern extension of main house



Plate 122: Toilets with front extension to south-east, above original entrance porch



Plate 123: Sample room within vertical extension above main house. Note water ingress from breaches at roof level



Plate 124: Cut timber roof structure above MPH



Plate 125: Two-over-two sash windows to the south of MPH.

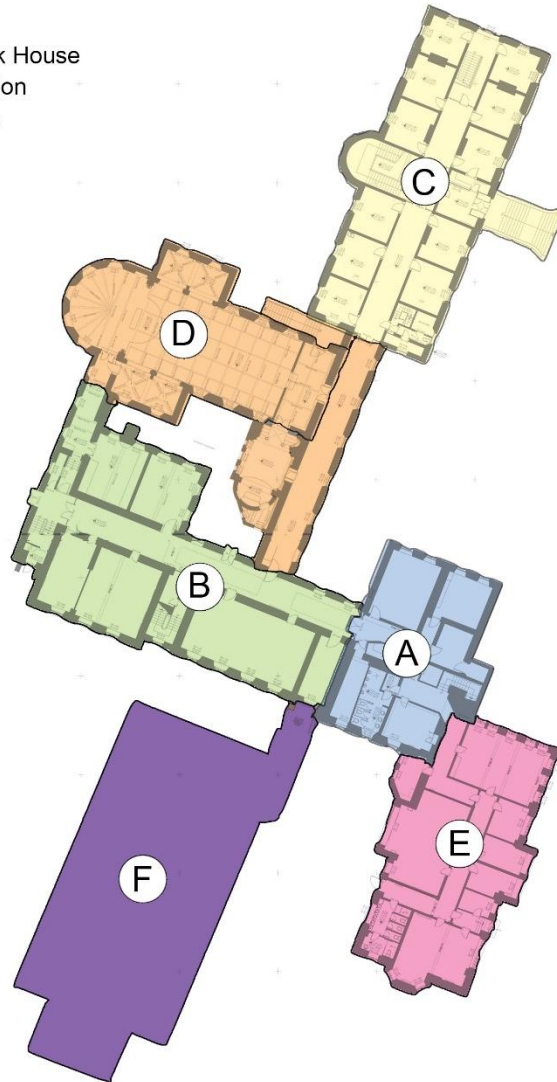
APPENDIX A7.2.9

BUILDING B

REAR EXTENSION BLOCK – INTERNAL IMAGES

RECEIVED: 25/02/2026

- Ⓐ Milltown Park House
- Ⓑ Rear Extension
- Ⓒ Tabor House
- Ⓓ Chapel
- Ⓔ Finlay Wing
- Ⓕ Archive



A7.2.10.1. Entrance Level

RECEIVED: 25/02/2026



Plate 126: View towards rear extension block from entrance of main house



Plate 127: Connection with rear extension block, from rear of entrance hall



Plate 128: Wide corridor within rear extension block, with dormitories/meeting rooms on either side



Plate 129: As above, opposing view

RECEIVED: 25/02/2026



Plate 130: View from entrance link, from main house to central corridor of rear extension block



Plate 131: Corridor at same level viewing west to east



Plate 132: Blocked up former link to Community Building, outside the subject development site

A7.2.10.2. Basement Level

RECEIVED: 25/02/2026



Plate 133: Dormitory at lower ground floor level. Note water ingress



Plate 134: Small service area which was previously used as a photography dark room



Plate 135: Narrow office space with partition wall, to the southwest corner of main house



Plate 136: Corridor viewing back to main house, from west to east



Plate 137: Same corridor, viewing from east to west



Plate 138: Small room with partitioned wall showing signs of water damage

A7.2.10.3 First Floor Level

RECEIVED: 25/02/2026



Plate 139: Lecture room within rear extension block at 1st floor level



Plate 140: Toilet block within 1st floor level



Plate 141: Later windows with original panelled shutters, exposed grid structure.



Plate 142: Corbelled chimneypiece within first floor of MPH rear extension.



Plate 143: Lecture room within rear extension block at 1st floor level. Panelled door, sash windows with panelled shutters.



Plate 144: Exposed structural grid in rear extension.

RECEIVED: 25/02/2026

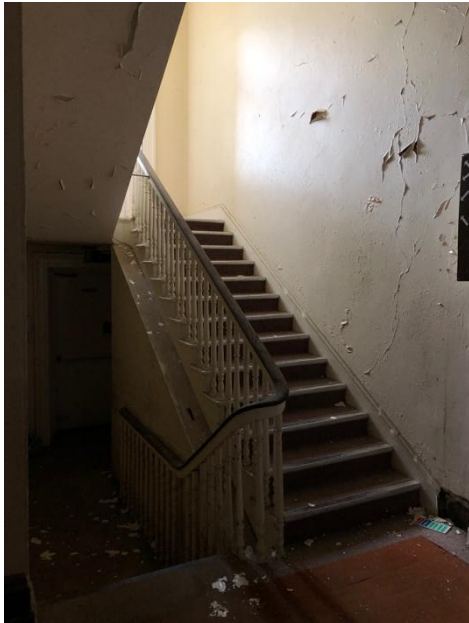


Plate 145: Stair linking 1st and entrance level of rear extension block



Plate 146: Stair linking 1st and entrance level of rear extension block



Plate 147: Stair access leading to a suite of rooms adjacent to the former domestic chapel at half level between entrance and 1st floor level of rear extension block

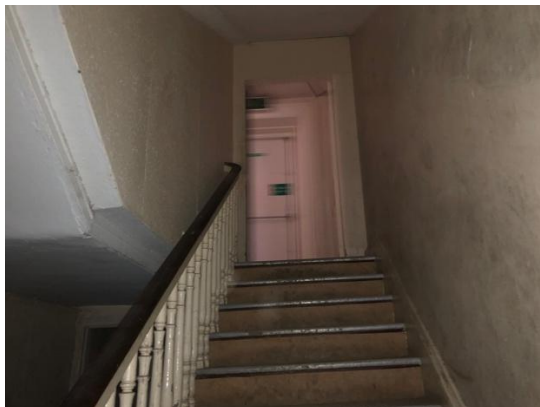


Plate 148: Alternative view of corresponding stair



Plate 149: Stairs to rear of former chapel accessing the chapel ante-room



Plate 150: Former domestic chapel, now a reading room, accessed from a short flight within the entrance level corridor within rear extension block



Plate 151: Round headed timber sash window with margin lights.



Plate 152: Coffered ceiling of former domestic Chapel.



Plate 153: Round headed timber sash window with margin lights within former domestic Chapel.



Plate 154: Detail of profile of sash window joinery.



Plate 155: Entry to former domestic Chapel from lower level internal entrance to south.



Plate 156: Round headed opening to lobby affording access to former domestic Chapel.



Plate 157: A typical dormitory with modern door



Plate 158: A typical dormitory with replacement arched window

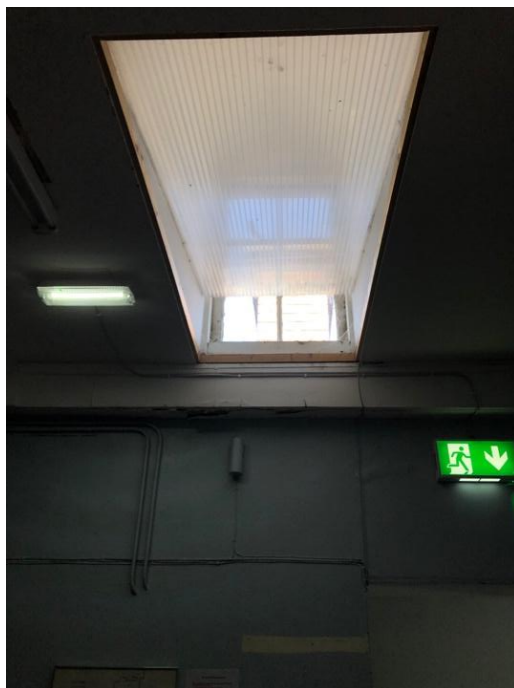


Plate 159: Roof-light at high level at rear of MPH

RECEIVED: 25/02/2026



Plate 160: A typical dormitory in main corridor with modern door and architrave. Exposed services.



Plate 161: A typical dormitory. Exposed services.



Plate 162: Larger dormitory room with modern windows, contemporary wall linings.



Plate 163: Large dormitory with original sash windows



Plate 164: Large lecture room with fireplace at first floor level. Chimneypiece with tiled cheeks.



Plate 165: Same Lecture room, view towards two-over-two sash windows.



Plate 166: Large lecture room with cast-iron fireplace at first floor level



Plate 167: Opening up works reveal mix of technologies in the construction of MPH extension. Mass concrete walls in upper part of rear extension



*Plate 168: Multiple layers of past interventions
Floor composition: floorboards on later timber joists, steel beams and 2 layers of later suspended ceilings.*



Plate 169: Level 1 first floor corridor, linking rear extension to rear of MPH. Sash windows, contemporary finishes throughout. Upper level of Former domestic chapel concealed behind wall to RHS.

A7.2.10.4 Stairs at rear of block

RECEIVED: 25/02/2026



Plate 170: Stair at rear of block. Timber, open tread with turned bannisters.



Plate 171: Detail of stair, hardwood handrail with swan-neck detail at landing.



Plate 172: Detail of stair from 2nd to 1st floor

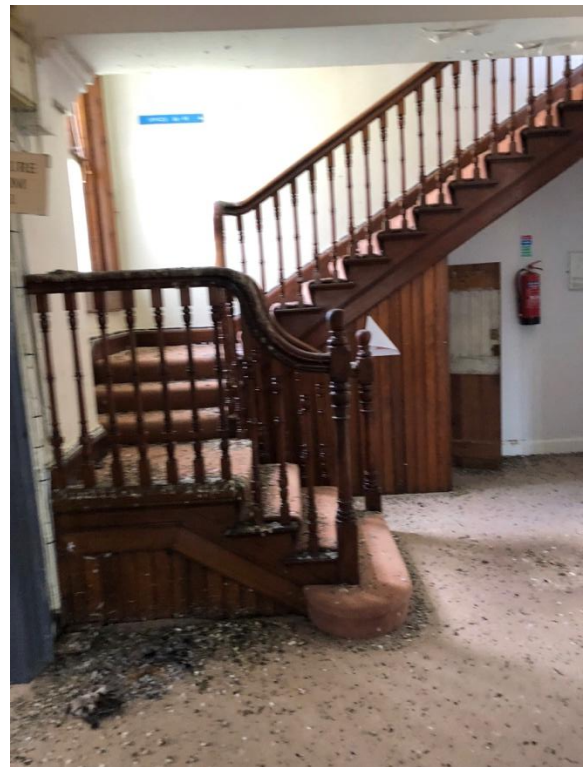


Plate 173: Detail of stair at entrance level

A7.2.10.5 Second Floor Level



Plate 174: 2nd floor level typical study room to front (east) on first floor with signs of water damage



Plate 175: Same level rear room



Plate 176: 2nd floor level office



Plate 177: Larger office space



Plate 178: Rear southwestern room at second floor level



Plate 179: Round-headed window in bedroom to southwest



Plate 180: Central corridor at 2nd floor level



Plate 181: Example of cast iron rooflight at 2nd floor level



Plate 182: Typical small lecture room absent of decorative detailing and having modern window at second floor level



Plate 183: Office / store room at same level



Plate 184: Painted stair to rear of block



Plate 185: Second floor landing

APPENDIX A7.2.10

BUILDING C
TABOR HOUSE – INTERNAL IMAGES

RECEIVED: 25/02/2026

- A Milltown Park House
- B Rear Extension
- C Tabor House
- D Chapel
- E Finlay Wing
- F Archive



A7.2.11.1. Entrance Level

RECEIVED: 25/02/2026



Plate 186: Later vestibule inside main entrance door.



Plate 187: Typical four paneled door and molded architrave within Tabor House



Plate 188: Corbel chimneypiece and cast iron insert



Plate 189: Typical ground floor window with paneled shutters.



Plate 190: Typical entrance level accommodation with corbelled chimney piece and original door, sashes and window boxes. Replacement window frames to northern elevation.



Plate 191: Corbel chimney piece and cast iron insert. Paneled door, molded architrave and picture rail.



Plate 192: Evidence of water damage to ceiling fabric.



Plate 193: Stepped cornice and picture rail in ground floor accommodation. Timber chimney piece with glazed tile insert.



Plate 194: Stepped cornice and picture rail in ground floor accommodation.



Plate 195: Two-over-two sash window, original shutters and architrave. Areas of plaster removed to reveal underlying masonry substrate.



Plate 196: Section of plaster removed to reveal brick substrate.



Plate 197: Corbel chimneypiece and cast iron insert. No cornice.

RECEIVED: 25/02/2026



Plate 198: Stairs to entrance level from northeast of basement with stained glass tripartite window at end of corridor.



Plate 199: 20th Century stained glass window to north east end of entrance level corridor



Plate 200: Stairs to entrance level from northeast of basement.



Plate 201: Lecture room/office at entrance level



Plate 202: Entrance level corridor with later cross-corridor fire screens. Water ingress damage to ceiling fabric.



Plate 203: Entrance level corridor with later cross-corridor fire screens. Collapsed ceiling fabric due to water ingress in view.



Plate 204: Cross-corridor fire screens, original molded architraves to paneled doors either side of corridor.



Plate 205: Paneled door with margin lights and colored glass detail.

A7.2.11.2. Lower Ground Floor Level

RECEIVED: 25/02/2026

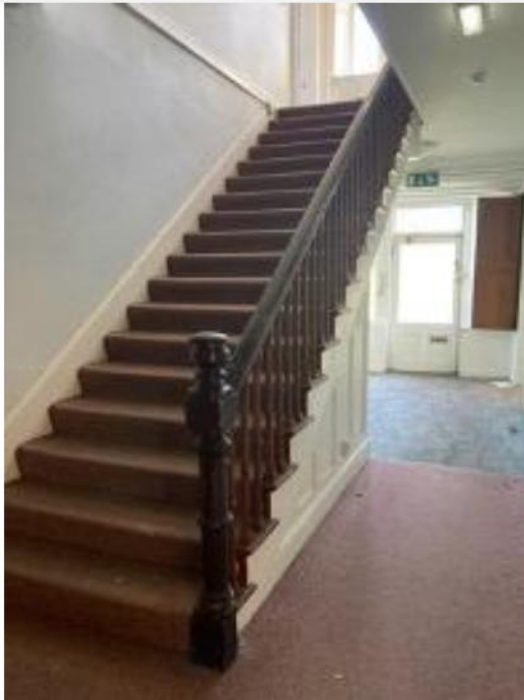


Plate 206: Open tread, timber stair in north-east bay. Turned newel post and timber handrail.



Plate 207: Side door and sash windows in north-east gable.



Plate 208: View from interior of side door, down corridor to main house. Panel detail to side of stair.



Plate 209: Interior view of side door to north east with glass panelling



Plate 210:: Under stair cupboard in hall at side entrance. Panel detail matching the entrance door.



Plate 211: Overgrown vegetation within lower ground floor impacting original joinery fabric. Corbelled chimneypiece matching those on the entrance level.



Plate 212: Original door and window joinery. Localised removal of internal render to inspect underlying masonry fabric.



Plate 213: Overgrown vegetation impacting original joinery fabric.

RECEIVED: 25/02/2026



Plate 214: Lecture room, with chimneypiece removed. Contemporary services surface mounted throughout.



Plate 215: Chimneypiece removed. Contemporary services surface mounted throughout.



Plate 216: Redundant dumb waiter.



Plate 217: Lower ground floor two-over-two timber sash window with panelled shutters.



Plate 218: Kitchen/dining area created by merging of former retreat rooms. Contemporary ceramic tiled floor finish. Exposed services throughout.



Plate 219: Kitchen/dining area created by merging of former retreat rooms



Plate 220: Wider view of dining room. Suspended ceilings and contemporary finishes.



Plate 221: Kitchenette on lower ground floor. Original chimney piece, paneled door, moulded architraves and skirting. Later fixtures and fittings.

RECEIVED: 25/02/2026



Plate 222: Amalgamated rooms to west. Original chimneypiece and window boxes.



Plate 223: Amalgamated room facing, opposing view.



Plate 224: Ad-hoc nature of services threaded through original fabric and temporary weathering.



Plate 225: Localised removal of plasterwork to reveal underlying masonry fabric.

RECEIVED: 25/02/2026



Plate 226: Services area at lower ground floor level with original walls exposed and painted. Original panelled door.



Plate 227: Dumb waiter from kitchen to dining area



Plate 228: Plant room at basement level. Exposed brick, painted finish.



Plate 229: Basement corridor with original window joinery.



Plate 230: Vaulted area under main entrance steps



Plate 231: Contemporary uPVC window on lower ground floor. Beneath main entrance.



Plate 232: Basement corridor



Plate 233: Contemporary uPVC window on lower ground floor. Beneath main entrance. Note deterioration of ceiling fabric indicative of water ingress through exterior steps.

RECEIVED: 25/02/2026



Plate 234: Lower ground floor entry to rear (north) elevation within rounded bay. Later suspended ceiling.



Plate 235: Later timber-framed fire screens within corridor.



Plate 236: Later lobbies and cross-corridor fire rated screens and suspended ceilings.



Plate 237: Lower ground floor, fire-rated screen in front of timber stairs in north-eastern bay.

RECEIVED: 25/02/2026



Plate 238: Contemporary fixtures and fittings and services. Original door joinery.



Plate 239: Original chimneypiece with scrolled corbels supporting mantel



Plate 240: Contemporary fixtures and fittings and services. Original window joinery.



Plate 241: Contemporary fixtures and fittings and services. Exposed services.

A7.2.11.3. First Floor Level

RECEIVED: 25/02/2026



Plate 242: Central corridor with later fire-rated screens across corridors and enclosing stairs.



Plate 243: View of south west window towards tripartite window, Original joinery, picture rail, no cornice.

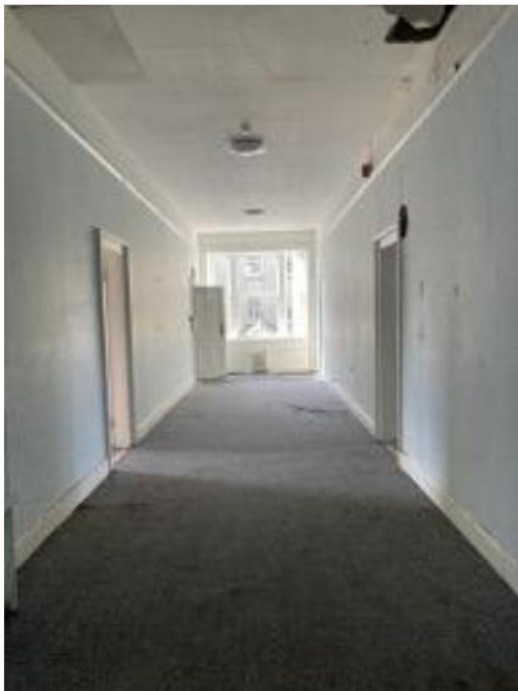


Plate 244: View down central spine corridor facing west towards tripartite window.



Plate 245: Typical first floor accommodation, original window-box with contemporary uPVC window. Exposed services, no decorative plasterwork.

RECEIVED: 25/02/2026



Plate 246: Dormitory facing south east, original window-box with contemporary uPVC window.



Plate 247: Dormitory with laminate flooring. Original window-box and two-over-two timber sash.



Plate 248: Dormitory with original window-box and two-over-two timber sash.



Plate 249: Four paneled door with molded architrave. No decorative plasterwork.

RECEIVED: 25/02/2026



Plate 250: Chimneybreast with chimneypiece removed. Evidence of water damage to ceilings and walls.



Plate 251: Original window boxes with contemporary uPVC window frame.



Plate 252: Timber window with opening casement sections,



Plate 253: Contemporary fixtures and fittings and suspended ceilings.

A7.2.11.4. Secondary stair to south-west bay of Tabor House

RECEIVED: 25/02/2026



Plate 254: Secondary staircase in western bay with shaped flat metal handrail and square profile uprights. Vertical timber boarding to side of stair.



Plate 255: Arrangement of original paneled doors and transom lights within secondary stair enclosure.



Plate 256: Detail of metal balustrade.

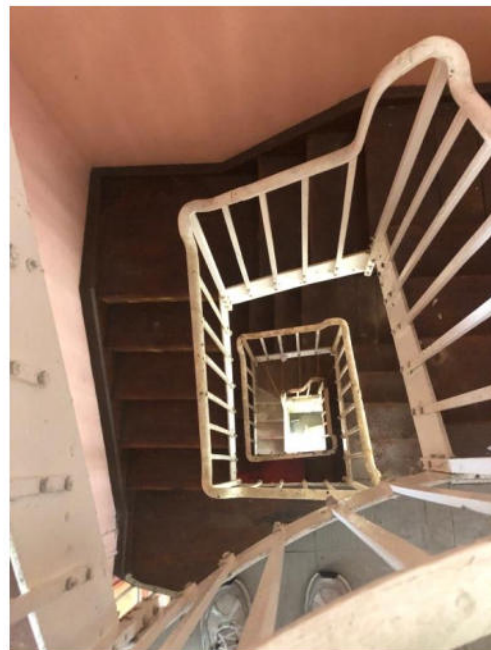


Plate 257: View down winding staircase

A7.2.11.5. Second Floor Level

RECEIVED: 25/02/2026



Plate 258: Large seminar room which runs the width of the NE gable, 2nd floor and has views north, east and west. Original window joinery.



Plate 259: Seminar room with contemporary fixtures and services.



Plate 260: Detail of tripartite sash window.



Plate 261: Example of removed chimney piece to typical bedroom.



Plate 262: Second floor bedroom. Contemporary uPVC window frame with original timber window boxes.



Plate 263: No chimneypiece. Original joinery. Staining of ceiling suggestive of water ingress.



Plate 264: Second floor corridor with later screen doors to central stair and across corridor. Bedroom doors are panelled with moulded architraves.



Plate 265: Water ingress damage from roof impacting second floor corridor ceiling



Plate 266: Central spine corridor with water staining evident to ceiling.



Plate 267: Damage to ceiling and wall fabric due to water ingress.



Plate 268: Typical upper floor accommodation. Original four paneled door and architrave.



Plate 269: Original window box with contemporary uPVC window frame.

RECEIVED: 25/02/2026



Plate 270: Fire rated partition door with glass panels within central corridor



Plate 271: Example of former bedroom with chimney piece removed.

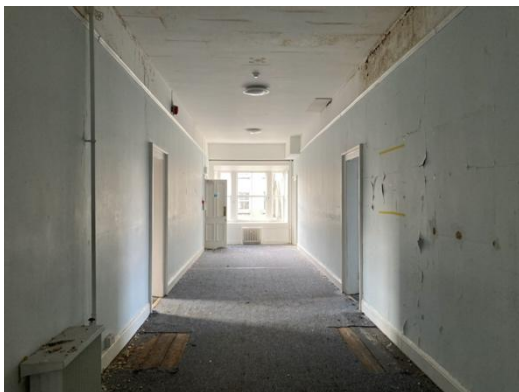


Plate 272: Central spine corridor. Original timber floor under carpet finish. Staining to ceiling evident.



Plate 273: Mould growth evident on wall and ceiling surfaces.



Plate 274: Original window joinery.



Plate 275: Original window joinery, with contemporary uPVC window frame in north elevation.



Plate 276: Corridor to former bathrooms.



Plate 277: Simple white wall tile laid in stacked bond on wall of former bathroom. Floor tiling removed.

A7.2.11.5. Central Stair

RECEIVED: 25/02/2026



Plate 278: Main stairs with open well within rounded bay to rear (north) of Tabor House



Plate 279: Turned timber balusters with heavy newel post matching the stair in the northern bay.



Plate 280: Paneled door with margin lights and coloured glass detail.

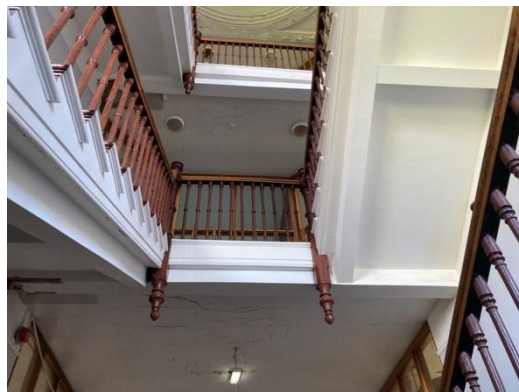


Plate 281: View of main stairs through central well.

RECEIVED: 25/02/2026



Plate 282:: Return at top of central stairs, with arch headed niches in half-landing



Plate 283: View down central stair



Plate 284: View from second floor landing to third floor with later glass door screen to corridor



Plate 285: View up stair



Plate 191: Coffered ceiling and moulded cornice within main stairwell.



Plate 192: Flaking paint and staining of ceiling due to water ingress.

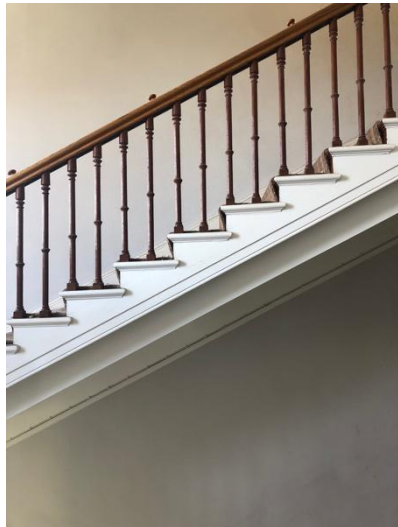


Plate 286: Detail of oak handrail



Plate 287: Level 2 landing facing north.



Plate 191: Damage to ceiling above main stairwell.



Plate 192: Roof breach in second floor ceiling with roof space exposed.



Plate 288: Rounded niche on half-landing flanked by a pair of two-over-two sash windows.



Plate 289: Central spine corridor with water damage evident on ceiling and top of walls.

APPENDIX A7.2.11

BUILDING D
CHAPEL – INTERNAL IMAGES

RECEIVED: 25/02/2026

- A Milltown Park House
- B Rear Extension
- C Tabor House
- D Chapel
- E Finlay Wing
- F Archive



A7.2.12.1. Entrance Level

RECEIVED: 25/02/2026



Plate 290: Carved mahogany entrance doors and pillars to chapel which is accessed from Milltown Park House

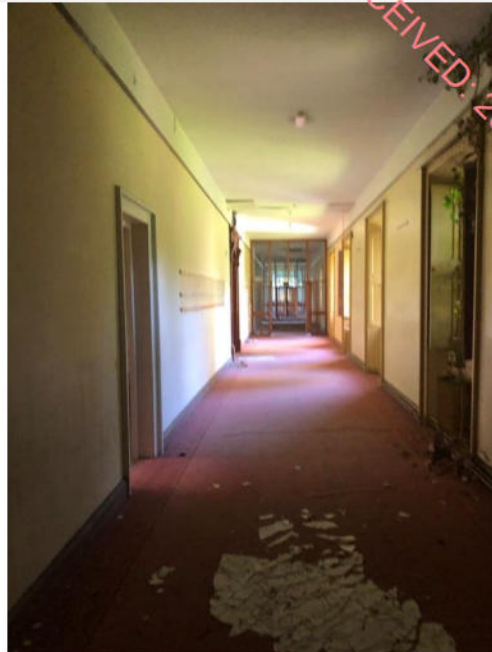


Plate 291: Approach to chapel entrance from the entrance level corridor

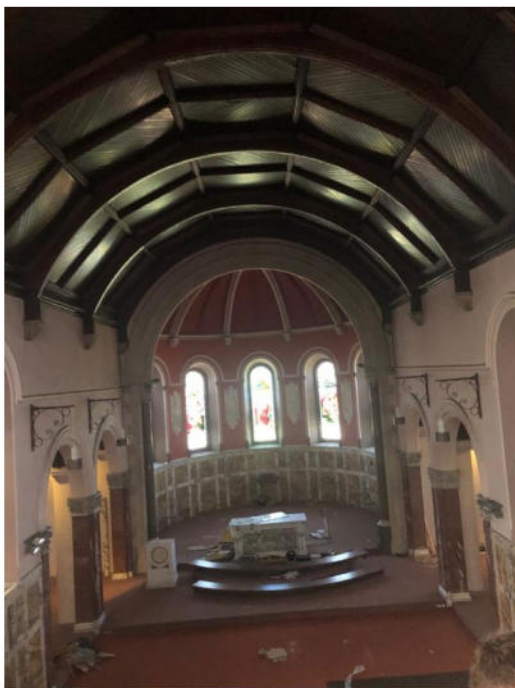


Plate 292: View of the nave and the carved marble altar from the gallery. The painted 'Angel' canvases behind alter by Harry Clarke (1927) were removed by the National Gallery of Ireland in 2021.



Plate 293: Scarred profile of position of Harry Clarke paintings



Plate 294: Side chapel



Plate 295: Internal view of side chapel

RECEIVED: 25/02/2026



Plate 299: View of the gallery from the nave. The organ was given to Fr. Finlay by Chief Baron

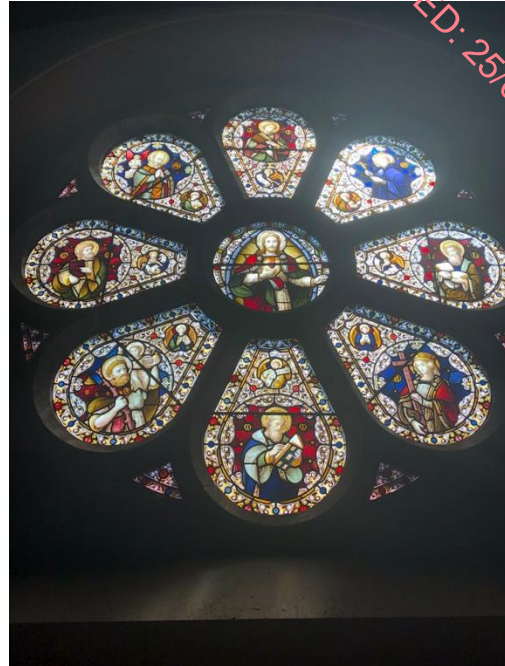


Plate 300: Rose window given to Fr. Finlay by Chief Baron



Plate 301: South wall of nave. Note the absence of the Stations of the Cross which were removed

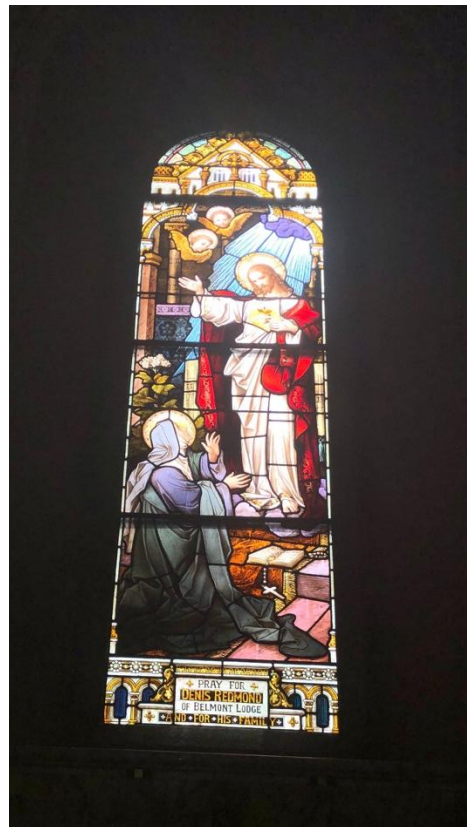


Plate 302: Detail of stained glass window



Plate 303: Gallery, facing west, with organ to rear.



Plate 304: Side chapels with stained glass windows.



Plate 305: Opposing view, side chapels.



Plate 306: View of nave, facing west.

RECEIVED: 25/02/2026

A7.2.12.2. Western corridor linking Building D to B2



Plate 307: View along corridor on western side of complex between Building D (Chapel) and B2 towards chapel. Arch headed opening at connection to Building B2



Plate 308: Corridor leading to sanctuary



Plate 309: Detail of timber panelled ceiling.

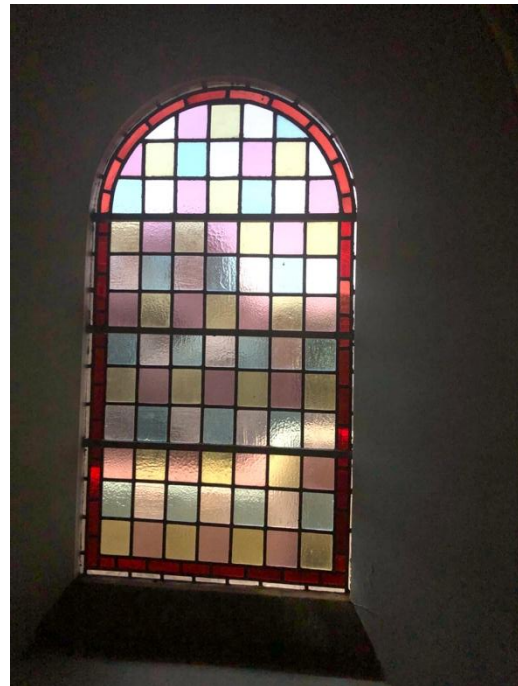


Plate 310: Round-headed window with stained glass. Curved plaster detail on reveal.



Plate 311: Doorcase from Chapel (left) to sacristy (right) within Building B2



Plate 312: Panelled joinery within corridor linking Chapel to Building B2



Plate 313: Panelled doors to Chapel, ceiling lined with diagonal timber sheeting.



Plate 314: Original joinery and fitted furniture within sacristy.



Plate 315: Storage press within sacristy conceals former door opening within Building B2 which was constructed in advance of Chapel.



Plate 316: Six-over-six timber sash within sacristy.



Plate 317: Original joinery and fitted furniture within sacristy.

A7.2.12.3. Building D2 - Sacred Heart Chapel

RECEIVED: 25/02/2026



Plate 318: Interior of the Sacred Heart Chapel, built 1911, which is accessed from within the larger domestic Chapel



Plate 319: Interior wall



Plate 320: Apsed recess for statue, now removed



Plate 321: Clerestory light above boarded groin vault



Plate 296: 5 stained glass windows which appear not to be signed or dated. Archive receipts from 1917 state windows, altar and decorations were by Early & Co, Camden Street, Dublin



Plate 297: Modern, abstract, stained glass, c1980s appear to have replaced original stained glass

A7.2.12.4. Lower ground floor level

RECEIVED: 25/02/2026



Plate 298: Corridor at lower ground floor level leading to dormitories and study rooms



Plate 299: Evidence of water ingress at base of wall.



Plate 300: Lowered ceiling. Arched openings supporting columns in Chapel above. Contemporary windows. No decorative plasterwork.



Plate 301: Arched openings supporting columns in Chapel above. Contemporary windows.

RECEIVED: 25/02/2026



Plate 302: Lower ground floor corridor with exposed services. Original sash windows and shutters.



Plate 303: Lower ground floor corridor with later lightweight partition enclosures.



Plate 304: Lower ground floor corridor with two-over-two timber sash window, splayed plaster reveal.



Plate 305: Detail of lower ground floor sash window and panelled shutters. Overgrown vegetation resulting in deterioration of fabric.



Plate 306: Typical panelled door and architrave at basement level.



Plate 307: Plant room area, with exposed brick, painted finish.



Plate 308: Panelled door with transom light over.



Plate 309: Lower ground floor, within rounded bay. Evidence of water ingress at base of walls.

A7.2.12.5. Link with Chapel at first floor level of Tabor House

RECEIVED: 25/02/2026



Plate 310: Link corridor to Chapel leading to choir stalls in the gallery area. Round headed panelled door with glazed upper panel.



Plate 311: View east from window in linking corridor



Plate 312: View west from linking corridor

APPENDIX A7.2.12

BUILDING E
FINLAY WING – INTERNAL IMAGES

RECEIVED: 25/02/2026

- A Milltown Park House
- B Rear Extension
- C Tabor House
- D Chapel
- E Finlay Wing
- F Archive



RECEIVED: 25/02/2026

A7.2.13.1. Access to Entrance Level



Plate 313: Entrance to the Finlay Wing, through front access link



Plate 314: Escape route from same entrance



Plate 315: Contemporary stairs to basement

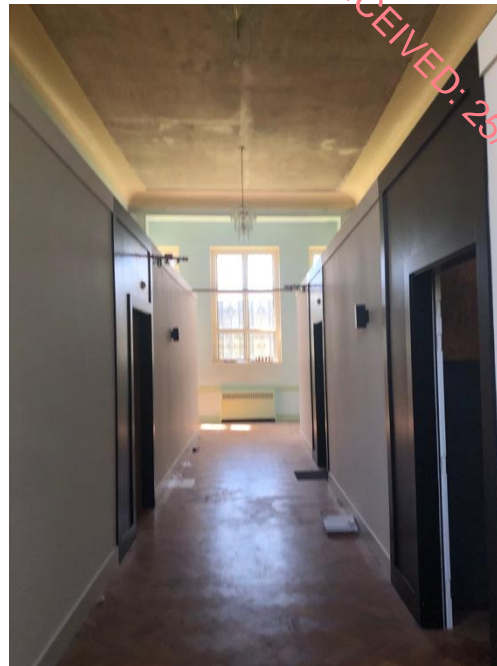


Plate 316: Contemporary stairs to basement.

A7.2.13.2. Entrance Level



Plate 317: Interior of Finlay Wing Theatre, viewing north to south (Note – This photograph was taken during a 2021 survey, prior to installation of partitions and is included for information only.)



RECEIVED: 25/02/2026

Plate 318: View within upper floor facing north. Mould growth evident on coppered ceiling. Note: Low partition walls are part of a recent, temporary installation.



Plate 319: Grid structure within main room on upper floor level. Rectangular plan pillars support the beams spanning across the width of the room.



Plate 320: Leaded windows in southern gable. Note water ingress at ceiling level



Plate 321: Leaded corner-windows flanking the external entrance.



Plate 322: Localised area of render removed to reveal masonry substrate.



Plate 323: Coffered ceilings formed by structural beams and simple plaster coving.



Plate 324: Ceiling showing some signs of water damage

RECEIVED: 25/02/2026



Plate 325: External doors with leaded lights over.



Plate 326: Concertina doors subdivide the hall on upper ground level. Note: Low partition walls are part of a recent, temporary installation.



Plate 327: Herringbone parquet flooring within main room. Note: Low partition walls are part of a recent, temporary installation.



Plate 328: Detail of panelled concertina doors

RECEIVED: 25/02/2026



Plate 329: Concave cornice inset inside structural elements.



Plate 330: Original leaded windows, herringbone floor and sub-dividing concertina doors.



Plate 331: Intersection of structural elements have a curved detail. Note: Low partition walls are part of a recent, temporary installation.



Plate 332: Large leaded window in gable. Note: Low partition walls are part of a recent, temporary installation.



Plate 333: Detail of leaded windows in south - western gable.



Plate 334:



Plate 335: Chamfered bay window with leaded windows.

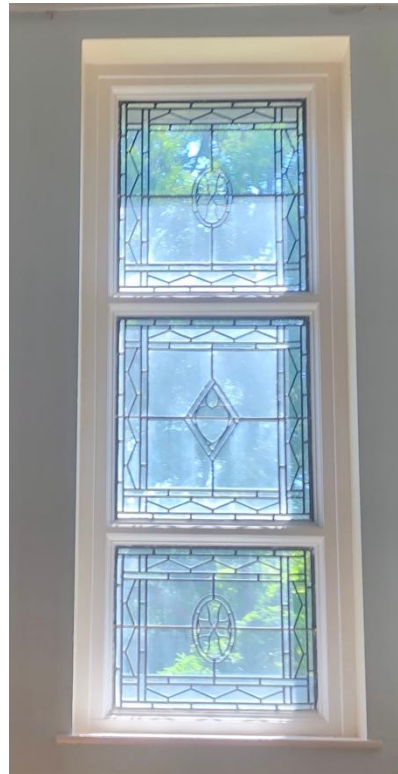


Plate 336: Detail of leaded window.

RECEIVED: 25/02/2026

A7.2.13.3. Lower Ground Floor Level



Plate 337: Large lecture room within the Finlay Wing, to the northeast

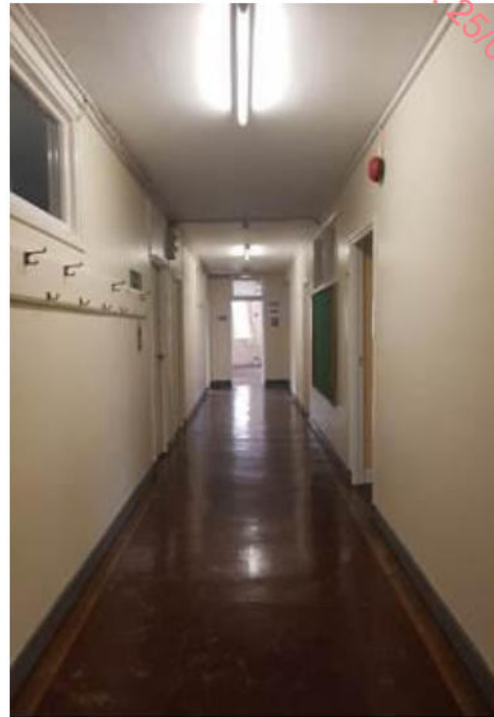


Plate 338: Basement corridor within the Finlay Wing



Plate 339: Lower ground floor level office within the Finlay Wing

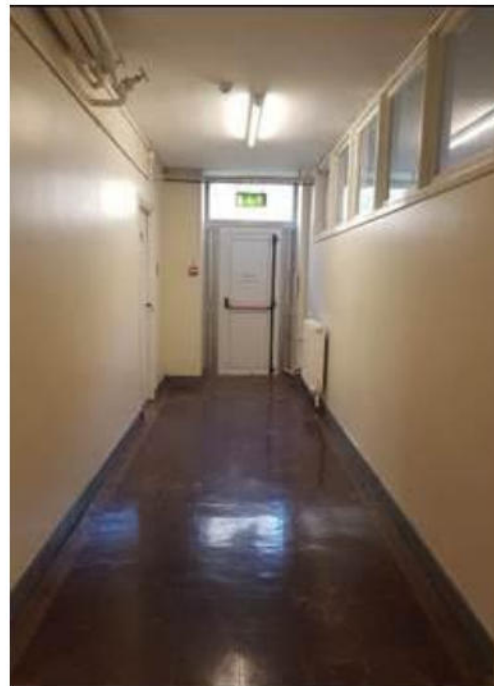


Plate 340: Corridor with fire door exit within the Finlay Wing

RECEIVED: 25/02/2026



Plate 341: Fire door within central corridor with flood relief barrier evident



Plate 342: Bowed room at southern end of the Finlay Wing



Plate 343: Toilets within the same area



Plate 344: Large storage room



Plate 345::Basement services



Plate 346: As above

RECEIVED: 25/02/2026

APPENDIX A7.2.13

BUILDING F
ARCHIVE – INTERNAL IMAGES

RECEIVED: 25/02/2026

- A Milltown Park House
- B Rear Extension
- C Tabor House
- D Chapel
- E Finlay Wing





Plate 347: View of the Art deco style archive from the entrance door, due south



Plate 348: Interview view due north from second floor stairs

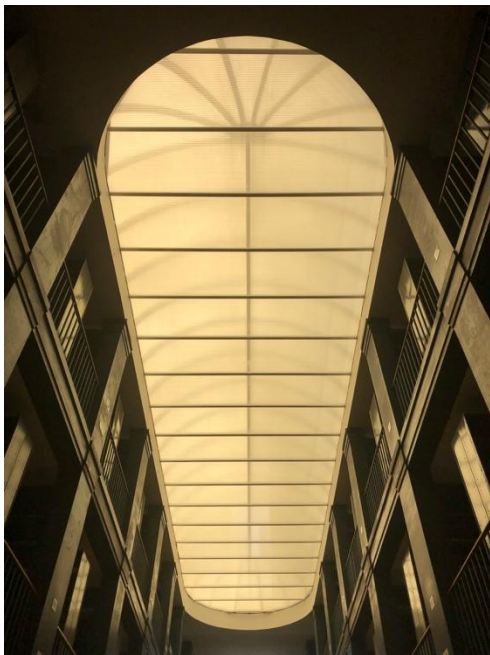


Plate 349: Internal lightwell

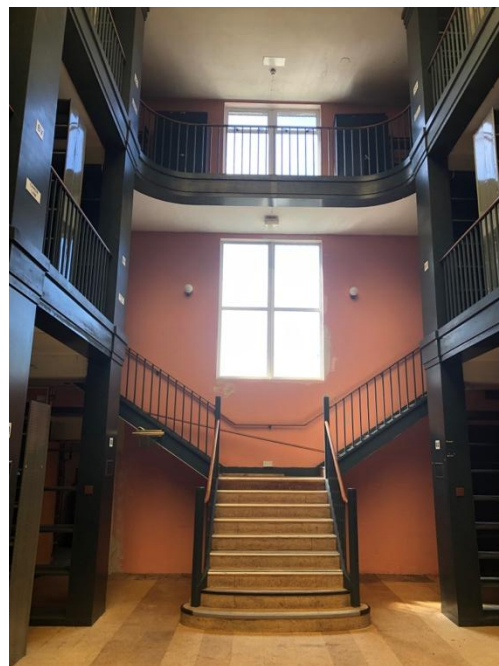


Plate 350: Stairs to first and second floor level mezzanines



Plate 351: Gallery view due south



Plate 352: Detail of bay composition

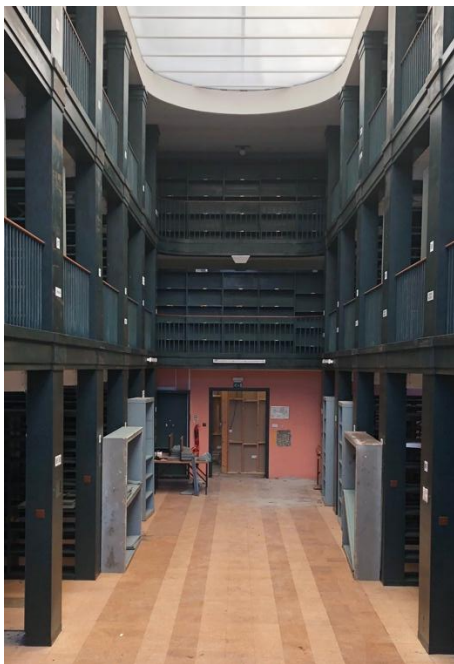


Plate 353: View due north

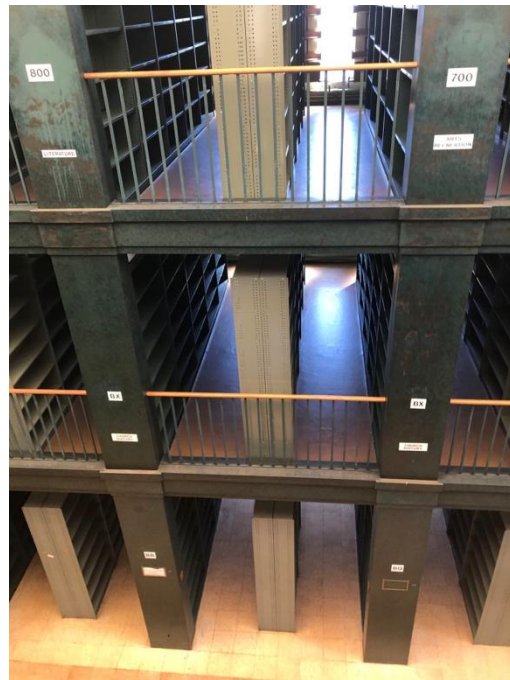


Plate 354: View of the metal structure aligned with custom built bookshelves



Plate 355: As above

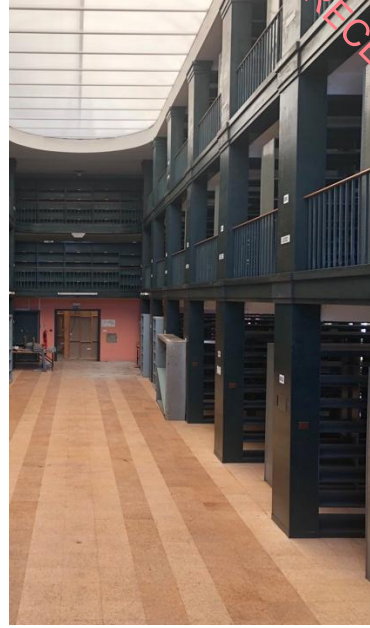


Plate 356: As above



Plate 357: Detail of stair steel banister and oak handrail



Plate 358: Detail of curved handrail at end floor mezzanine level

RECEIVED: 25/02/2026



Plate 359: Alternative view



Plate 360: Example of light fitting common throughout



Plate 361: View of Level 1, with steel bookshelves to RHS



Plate 362: View towards central atrium

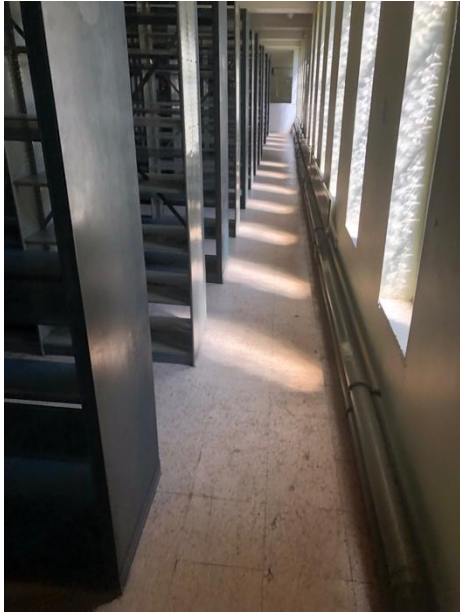


Plate 363: View of Level 1, with steel bookshelves to RHS



Plate 364:



Plate 365: Makers stamp on steel bookcases and storage 'Metal Utilities, 10-12 Hanover Quay, Dublin.

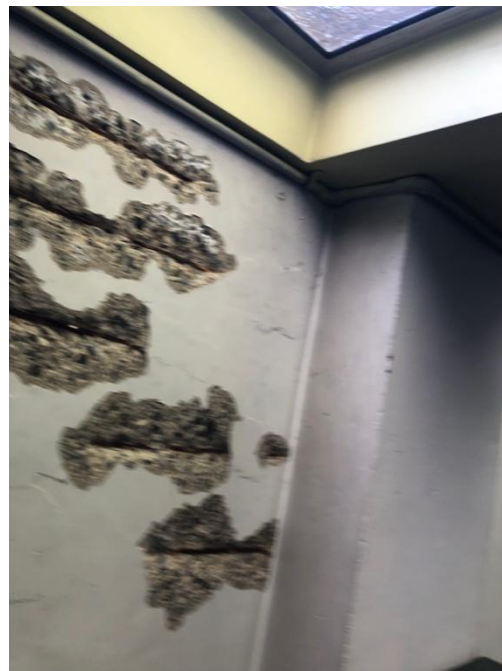


Plate 366: Brick substrate revealed behind removed section of internal plaster.



Plate 367: View towards entrance to archive. Note multiple level changes.

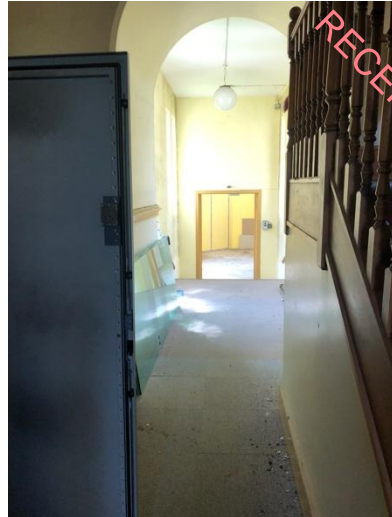


Plate 368: Opposing view from link to archive building, back towards rear extension to MPH.



Plate 369: Early 20th century steel windows with casement openings.



Plate 370: Archival / storage room within archives.